

12

Transport and Storage



Introduction

Statistics presented in this chapter are on transport (land, water and air), storage, post and telecommunications. Below you will find a brief record of statistics production on each area.

Land transport

A. Railways: In the year 1324, the Iranian State Railways for the first time established a statistical unit as the Statistics and Studies Office to meet its statistical needs for planning.

At present, the Statistics and Electronic Services Bureau of the Railways of the Islamic Republic of Iran compiles and publishes required statistics annually based on the daily and monthly reports from different regions and districts.

B. Road transport: The oldest data on the length of main roads available to the SCI date back to the year 1340 which appeared in the first statistical yearbook in the year 1345. At present, data on roads are produced by the Statistics and Plan Integration Bureau of the Ministry of Roads and Transportation.

By transferring the responsibility of construction and maintenance of rural roads from the Ministry of Roads and Transportation to the then Ministry of Jihad-e-Sazandegi (present Ministry of Jihad-e-Agriculture) in the year 1368, data on rural roads were collected and supplied by this Ministry. However, as of the month of Tir of the year 1381, the Ministry of Roads and Transportation was entrusted with the responsibility of "rural roads" activities again, but currently the information is supplied by the Office of Statistics and Plan Integration of the Ministry of Roads and Transportation.

Moreover, statistics on the number of registered motor vehicles from the Police Department are presented in this chapter.

No comprehensive statistics on volume of transport and motor vehicle traffic in public roads were available until the year 1341, when the Ministry of Roads and Transportation produced such data for the first time. However, due to different Problems, the activity was not a continuous one.

Due to increasing needs for statistical data in this area, the responsibility of data collection was first entrusted to the Statistics and Planning Office of the State Organization of Transportation and Terminals in 1361 and then shifted to its IT office in the second midyear 1376 – The organization was renamed Road Maintenance & Transportation Organization in the year 1382.

In the year 1366, in order to remove some of the statistical shortages in this area, the SCI compiled data on characteristics of road transport fleet, drivers, and the freight carried, by implementing "Survey of Road Transport", summary results of which were presented in the previous yearbooks.

Water transport

Data on ports - mostly on the number and capacity of vessels entered and duration of their stays - were compiled through a statistical survey conducted by the Ports and Shipping Organization (PSO) in the year 1342. At present, PSO compiles the data as registers.

In addition to the I.R.I. Shipping Company, which started its operations under the title of Iranian Commercial Shipping in the year 1346, three other companies, namely Iran-India Shipping, Valfajr 8 Shipping, and the Caspian

Sea Shipping are also transporting passengers and freight. Data on these three are included in this chapter.

Air transport

Statistics on air transport was taken into consideration by establishment of the first local airline, National Iranian Airline, in the year 1323, renamed the Airline of the I.R. of Iran following the Islamic Revolution. Other airlines were established after the victory of the Islamic Revolution including Aseman in the year 1359, Iran-Air Tour, Payam, Caspian, Kish Air, Saha and Safiran in the year 1371 and Mahan Air in the year 1372. The data on local airlines are compiled by the Civil Aviation Organization (CAO).

Data on international airlines operations in Iran presented in this chapter are supplied to the Civil Aviation Organization by their agencies. The CAO provides the SCI with these data.

Storage

The SCI conducted nationwide Census of Cold Storages and Survey of Establishments Rendering Storage Services in the years 1366 and 1370 respectively. In order to produce data on general characteristics of storages, the SCI undertook nationwide Survey of Storages in the year 1373.

Moreover, by using the outcomes of the 1373 General Mining and Manufacturing Census updated and completed according to the data of the related organizations, the SCI conducted the Census of Warehouses and Cold Storages in the years 1377 and 1380. In the years 1382 and 1384, by using the frame of the 1381 General Census of Establishments, the SCI attempted to collect the stated data.

It should be noted that the 1377, 1380, 1382, 1384, 1387 and 1390 censuses covered only the independent or affiliated warehouses and cold storages that had rendered their services to the public. Data for wheat silos are from Commerce Department of State Cereal Organization since the year 1374. The organization was renamed Iran Public Commerce on 1st Esfand 1382.

Definitions and concepts

Railway: tracks for the transport of cargo and/or passengers by rail transport vehicles, which is divided into main track and side track

Main tracks: lines which connect railway stations.

Side tracks: are non-main tracks including commercial-industrial and shunting tracks.

Shunting tracks: tracks established for separating trains from coaches or connecting them to each other in administrative railway stations.

Commercial-industrial lines of railway: lines which branch off from lines inside the railway station and are connected to inside lines of requesting institutions upon the request of government, industrial or agricultural and commercial institutions.

Locomotive: a vehicle with propelling power which is used to move wagons and classified by type of energy consumption (electric, diesel and steam) and use type (main shunting).

Net weight of freight: total weight of commercial and government freight (excluding freight of the railway) as well as the weight of luggage.

Gross weight of freight: total net weight of freight as well as the weight of the train.

Railway Luggage: freight which is not allowed to be carried with the passengers in wagon on the

basis of railway regulation, but it is carried in a special wagon by passenger trains with the same name.

Freeway: a physically separate 2-way traffic motorway without level crossings. The way for entering and leaving it is through certain and limited areas only.

Highway (4-line main road): a physically separate 4-way traffic motorway whose crossings can be level too.

Rural road: a way which connects rural production centres to by-roads and main roads.

Port: a vast water area including still main and side basins, docks, installations, equipment, and side buildings located on the land for the traffic of vessels in order to carry out required operation.

Commercial port: a port in which exclusively trade goods are loaded and unloaded.

Vessel: any type of marine transport means. Vessels may be classified by type and their usage.

Ship: any vessel usually made of metal with an engine and a gross capacity of over 500 tons.

Gross registered capacity of vessel: capacity of the vessel in ton (100 cubic feet) recorded in the related certificate under international regulations.

Net registered capacity of vessel: gross registered capacity less the volume of space occupied by machinery, employees, warehouses and other space considered for navigation as recorded in the related certificate under international regulations.

Tonnage: weight of goods carried, with respect to their volumes, in tons or ton equivalent. According to sanctioned tariffs, a certain volume of goods is considered equivalent to one ton and fare must be paid for one ton.

Bulk carrier (dry): those carrying homogenous shipments and warehouses on a single deck. These carriers usually lack crane and have only two big hooks for handling goods.

General cargo vessels: vessels with several warehouses on several (usually two or three) decks with cranes for cargo handling.

Oil tanker: vessel used for transporting liquids.

Multi-purpose carrier: vessel carrying a variety of cargoes such as containers, miscellaneous goods, bags and bulk. In these vessels, the dimensions of warehouses and decks are usually a multiplier of a 20-foot container. These vessels have a capacity of about 20000 tons with 4 or 5 warehouses as well as 3 to 5 cranes.

Container carrier: special vessels carrying containers with a transport capacity of about seven hundred 20-foot containers.

Airport: refers to any type of building, installations and equipment located on the land or at sea, all or part of which is used for arrival, departure and traffic of the airplanes.

Flight: the motion of an airplane from an airport to another under a certain number, which may include one or more stages.

Domestic flight: flight is carried out by domestic airlines whose flight origin and destination is inside the country, even if the flight route crosses the international borders.

Air passenger: a person (excluding pilot and the crew) who travels by plane.

Domestic air passenger: a person whose flight and destination is inside the country, even if his /her flight route crosses the international borders.

International in-coming passenger: a person whose flight origin and destination is outside and inside the country respectively.

International out-going passenger: a person whose flight origin and destination is abroad.

Air cargo: a cargo with a bill of lading transported by aircraft, excluding freight carried by the passenger.

Air postal parcels: all postal parcels such as letters or post depository parcel delivered to the airlines as DEPESH.

Cooperative: refer to the definitions and concepts of the 5th chapter: "Agriculture, Forestry and Fisheries".

Transportation cooperatives: a company which is formed and registered with natural persons or non-government legal persons based on cooperative law to transport goods, passengers or both by land, air, and railway.

Establishment: a place or part of place where continuous and regular activities are carried out under a single management and accounting.

Main activity of an establishment: an activity for which most of the establishment facilities, installations and equipment have been provided and from which most of the establishment income is earned.

Storage: a place or enclosed area the whole or a part of which is allocated to warehousing. Storages are divided by type of building (uncovered, covered...), type of use (public and private), type of equipment (mechanized, cold storage, silo, wheat silo, warehouse...) and other features.

Cold storage: an independent establishment the whole or a part of which is allocated to carry out activities relating to cold storage services for keeping and reserving crops, livestock products and perishable goods, under certain conditions with respect to temperature, humidity, etc. and renders services to the public

(whether or not producing services for own use).

One and two-circuit hall: in one-circuit halls, temperature is roughly fixed either below or above zero and is inconvertible from a point into the other point, while, in a two-circuit hall, temperature can be converted from one point into the other point, i.e. the circuit below or above zero can be used when necessary.

Silo: a place for vertical and horizontal storing. It has a metal or concrete construction for storing grainy and powdery substances in the bulk.

Uncovered warehouse: a special place within the enclosure of certain silos used for storing wheat for a short time. Wheats unloaded in these warehouses are transferred from loading pitch into the silo as soon as possible.

Regular covered warehouses: warehouses without any mechanized connection with the main silo. Cereals unloaded in these warehouses are transferred into the silo by truck or other vehicles.

Storage or cold storage in operation: an establishment rendering warehousing or cold storage services during a year for at least 30 successive or non-successive days.

Operating storage or cold storage: an establishment rendering warehousing or cold storage services during a year for at least 30 days and bearing charges for carrying out its activities as well as earning income.

Selected information

In the year 1394, the length of railway lines was 13348 kilometers which increased about 0.99 percent in comparison to the preceding year. In the same year, the length of the urban roads of the country was 86166 kilometers and the length of the rural roads was 128395 kilometers.

In the year 1394, the number of passengers transported via railways was about 24453000 persons. Furthermore, in the same year, the number of passengers transported via public road passenger vehicles (bus, minibus, and passenger vehicles) was over 178 mln persons, the destination of 55.8% and 44.2% of whom was intra-province and inter-province, respectively.

In the year 1394, about 1517000 motor vehicles were registered in the country which had a 19.3% increase in comparison to the preceding year.

In the year 1394, a number of 23584000 passengers were transported through national and international flights which increased by 3.3 percent in contrast to the previous year.

In the year 1394, the volume of goods unloaded and loaded at the commercial ports of the country was about 57 and 63 mln tons, respectively, of which 43% was for unloading and 60% for loading of non-oil goods.

12. 1. LENGTH OF RAILWAYS BY TYPE**(km)**

Year	Main lines	Shunting tracks	Industrial-commercial lines
1375.....	5612	1467	609
1380.....	7159	1308	788
1385.....	8595	1597	945
1390.....	9992	1827	966
1391.....	10223	1839	949
1392.....	10407	1889	945
1393.....	10376	1869	972
1394.....	10459	1873	1016

Source: Railways of the Islamic Republic of Iran.

12. 2. LOCOMOTIVES, PASSENGERS AND NET FREIGHT TRANSPORTED BY RAILWAYS

Year	Locomotives ⁽¹⁾		Passengers		Net freight	
	Number	Power (h.p.)	Number (1000 persons)	Man-kilometre (mln)	Weight (1000 tons)	Ton-kilometre (mln)
1375.....	264	661087	8882	7044	22650	13638
1380.....	277	711095	13111	8043	26392	14613
1385.....	360	1040400	21346	12549	32978	20542
1390.....	439	1294087	28560	17877	33104	21008
1391.....	433	1246986	27015	17172	34276	22604
1392.....	459	1311397	25533	17409	32693	22400
1393.....	509	1464769	24802	16272	34924	24461
1394.....	545	1541034	24453	14938	35647	25014

1. Including operating locomotives.

Source: Railways of the Islamic Republic of Iran.

12. 3. WEIGHT OF FREIGHT TRANSPORTED BY THE RAILWAYS (1000 tons)

Year	Total ⁽¹⁾	Oil products	Minerals	Agricultural products	Food stuff	Industrial products	Luggage	Other
1375.....	22650	3995	9211	1220	331	3791	43	4059
1380.....	26392	3109	11062	2041	416	4126	25	5613
1385.....	32978	4340	20452	1412	431	3614	32	2697
1390.....	33104	3176	23481	631	445	1631	52	3688
1391.....	34276	3251	24445	948	469	1570	56	3537
1392.....	32693	3319	24234	710	448	1150	58	2775
1393.....	34924	2919	24555	1536	416	2347	28	3123
1394.....	35647	3394	23486	1474	557	3183	238	3315

1. Including 499,559,1546, 956,906,530,797, and 1435 thousand tons for transiting.

Source: Railways of the Islamic Republic of Iran.

12.4. TYPES OF ROADS WITHIN THE JURISDICTION OF THE MINISTRY OF ROADS AND TRANSPORTATION (km)

Year and Ostan	Grand total	Inter-city roads					
		Total	Free ways	High ways	Main roads	By-roads	In-city road ⁽¹⁾
1375.....	164060	79183	615	2024	21698	43694	11152
1380.....	174559	80720	717	4267	21595	42050	12091
1385.....	176186	72611	1429	5468	21788	41129	2797
1390.....	206092	79829	2052	11652	22052	43258	815
1391.....	210717	81642	2166	12969	21234	44454	819
1392.....	215157	85623	2203	14155	21628	46485	1151
1393.....	217901	85893	2401	14488	24886	43323	795
1394.....	214560	86166	2401	15462	23879	43628	795
East Azarbayejan ⁽²⁾	9667	3464	234	332	973	1925	0
West Azarbayejan.....	8055	2948	0	292	664	1992	0
Ardebil ⁽²⁾	5310	1599	0	137	704	702	56
Esfahan ⁽²⁾	9931	5414	399	1695	2100	1220	0
Alborz.....	1300	393	66	95	152	81	0
Ilam.....	2908	1482	0	71	547	862	3
Bushehr ⁽²⁾	4015	2121	0	638	598	848	37
Tehran ⁽²⁾	2572	983	197	453	198	92	43
Chaharmahal & Bakhtiari ⁽²⁾	2963	1296	0	215	772	291	18
South Khorasan ⁽²⁾	11141	4455	0	404	1003	3048	0
Khorasan-e-Razavi ⁽²⁾	13455	6412	111	1015	1244	3960	82
North Khorasan ⁽²⁾	3681	1359	0	132	489	732	7
Khuzestan ⁽²⁾	13754	5276	160	1036	2807	1217	57
Zanjan.....	5248	1658	200	110	326	970	52
Semnan ⁽²⁾	3034	1600	30	660	346	564	0
Sistan & Baluchestan ⁽²⁾	15410	8010	0	228	1922	5842	17
Fars ⁽²⁾	15951	7430	0	1153	2089	4188	0
Qazvin.....	4580	1341	217	313	201	564	46
Qom ⁽²⁾	1381	678	209	191	123	155	0
Kordestan.....	6037	1819	0	178	281	1360	0
Kerman ⁽²⁾	12186	5692	56	1679	1262	2695	0
Kermanshah ⁽²⁾	7205	2841	0	347	511	1937	46
Kohgiluyeh & Boyerahmad.....	4380	1512	0	97	429	986	0
Golestan.....	4334	1231	0	274	701	255	0
Gilan.....	8336	1891	56	363	300	1036	135
Lorestan ⁽²⁾	7032	1856	104	364	709	626	52
Mazandaran.....	7101	2332	36	750	555	992	0
Markazi ⁽²⁾	5453	1845	207	386	437	766	49
Hormozgan ⁽²⁾	8238	2897	34	671	511	1681	0
Hamedan ⁽²⁾	5027	2036	85	498	302	1057	95
Yazd ⁽²⁾	4875	2295	0	686	624	985	0

12.4. TYPES OF ROADS WITHIN THE JURISDICTION OF THE MINISTRY OF ROADS AND TRANSPORTATION(continued) (km)

Year and Ostan	Rural roads		
	Total	Asphalted	Gravelled
1375.....	84877	22586	62291
1380.....	93839	45332	48507
1385.....	103575	64287	39288
1390.....	126263	95164	31099
1391.....	129075	99450	29625
1392.....	129534	101668	27867
1393.....	132008	105100	26908
1394.....	128395	103813	24582
East Azarbayejan ⁽²⁾	6203	5464	739
West Azarbayejan	5107	3700	1407
Ardebil ⁽²⁾	3711	2607	1104
Esfahan ⁽²⁾	4517	4252	265
Alborz.....	907	784	123
Ilam	1425	1277	148
Bushehr ⁽²⁾	1894	1795	99
Tehran ⁽²⁾	1589	1576	13
Chaharmahal & Bakhtiari ⁽²⁾	1667	1460	207
South Khorasan ⁽²⁾	6686	5189	1497
Khorasan-e-Razavi ⁽²⁾	7044	6605	439
North Khorasan ⁽²⁾	2322	1744	578
Khuzestan ⁽²⁾	8477	7241	1236
Zanjan	3590	2964	626
Semnan ⁽²⁾	1434	1267	167
Sistan & Baluchestan ⁽²⁾	7401	5060	2341
Fars ⁽²⁾	8522	7138	1384
Qazvin	3239	2521	718
Qom ⁽²⁾	703	642	61
Kordestan	4218	2631	1587
Kerman ⁽²⁾	6494	5824	670
Kermanshah ⁽²⁾	4364	3232	1131
Kohgiluyeh & Boyerahmad	2868	2110	758
Golestan.....	3103	2526	577
Gilan.....	6445	4374	2071
Lorestan ⁽²⁾	5177	3985	1192
Mazandaran	4769	4238	530
Markazi ⁽²⁾	3608	3147	460
Hormozgan ⁽²⁾	5341	3676	1665
Hamedan ⁽²⁾	2991	2611	380
Yazd ⁽²⁾	2580	2172	408

1. Referring to those inter-city roads which are kept by General Department of Roads and Transportation.

2. In these Ostans, the routes with separate coming and going paths are included as highway and only one route is calculated.

Source: Ministry of Roads and Urban Development.

12. 5. REGISTERED MOTOR VEHICLES AND MOTORCYCLES BY TYPE (unit)

Year and Ostan	Total	Passenger car	Bus	Minibus	Pick-up & light truck	Truck
1375.....	164899	109552 ⁽²⁾	902	1226	15423	4645
1380.....	451984	271886	2689	1306	44038	6037
1385.....	1932608	896483 ⁽²⁾	3366	1537	140858	15211
1390.....	2482718	1378860	2792	2534	200035	22003
1391.....	1333609	739330	1290	1531	136982	9899
1392.....	1127361	691740	737	320	98651	7144
1393.....	1880130	1076946	674	217	178081	40664
1394.....	1516917	925898	719	509	79420	33529
East Azarbayejan	42459	27188	34	4	3636	1474
West Azarbayejan	40105	27345	29	14	3549	1080
Ardebil	14201	9595	16	3	1292	1340
Esfahan	106856	58610	181	8	4713	1541
Alborz	10470	0	0	0	0	0
Ilam	8286	5691	4	7	553	453
Bushehr	31393	16669	26	96	1408	534
Tehran	448419	334478	269	134	18712	2849
Chaharmahal & Bakhtiyari	13063	6847	6	1	1091	333
South Khorasan.....	9027	5000	0	4	526	366
Khorasan-e-Razavi.....	124395	58265	38	24	5367	4651
North Khorasan.....	13920	5178	0	1	895	1906
Khuzestan.....	94609	57988	8	35	3759	1598
Zanjan	14726	6458	8	3	1560	774
Semnan	10481	6382	2	0	645	636
Sistan & Baluchestan	26428	13242	8	7	854	308
Fars	106542	64326	17	67	6560	1514
Qazvin	17540	9636	3	4	1207	653
Qom.....	23871	13012	6	7	757	160
Kordestan	15542	6855	6	4	859	1251
Kerman	52313	29732	1	12	2781	879
Kermanshah	22419	15028	15	1	1715	1057
Kohgiluyeh & Boyerahmad	7946	5989	1	7	633	454
Golestan	29713	16269	7	3	1658	2027
Gilan.....	33445	20247	6	2	1969	415
Lorestan	25351	13483	9	3	1499	1162
Mazandaran	48165	32282	3	12	4775	1040
Markazi	22866	11896	2	10	1446	1227
Hormozgan	40019	20436	1	31	1482	310
Hamedan	27883	12132	13	1	1950	1363
Yazd	34464	15639	0	4	1569	174

12. 5. REGISTERED MOTOR VEHICLES AND MOTORCYCLES BY TYPE(continued) (unit)

Year and Ostan	Trailer	Motor -cycle	Taxi	Ambulance	Agricultural machinery	Other ⁽¹⁾
1375.....	1184	31967	000	000	000	000
1380.....	1677	124351	000	000	000	000
1385.....	12527	862626	000	000	000	000
1390.....	000	813386	39460	1730	6169	15749
1391.....	0	418733	3293	662	9869	12020
1392.....	000	312594	945	530	5559	9141
1393.....	000	538632	7276	568	20565	16507
1394.....	000	453249	3294	537	11302	8460
East Azarbayejan	000	9669	45	25	110	274
West Azarbayejan	000	7180	35	20	572	281
Ardebil	000	816	72	10	906	151
Esfahan	000	40973	38	10	142	640
Alborz.....	000	10470	0	0	0	0
Ilam	000	1187	2	8	315	66
Bushehr.....	000	12532	0	20	5	103
Tehran	000	88000	1048	124	110	2695
Chaharmahal & Bakhtiyari	000	4595	9	9	53	119
South Khorasan	000	2977	9	13	79	53
Khorasan-e-Razavi	000	53907	1262	42	377	462
North Khorasan.....	000	5388	36	14	345	157
Khuzestan	000	30361	16	4	501	339
Zanjan.....	000	5594	81	14	141	93
Semnan	000	2611	15	3	162	25
Sistan & Baluchestan	000	11770	20	38	1	180
Fars	000	32854	141	46	213	804
Qazvin	000	5775	14	7	148	93
Qom.....	000	9874	30	8	7	10
Kordestan	000	4426	67	21	1987	66
Kerman	000	17942	63	11	592	300
Kermanshah	000	4130	42	19	293	119
Kohgiluyeh & Boyerahmad	000	827	7	0	2	26
Golestan.....	000	9481	29	3	41	195
Gilan	000	10517	57	10	182	40
Lorestan	000	8363	2	5	650	175
Mazandaran	000	9303	85	15	256	394
Markazi	000	7619	51	7	490	118
Hormozgan	000	17355	0	16	150	238
Hamedan	000	9921	3	3	2387	110
Yazd	000	16832	15	12	85	134

1. Including towand semi-tow truck.

2. Including ambulance too.

Source: Police Department

12.6. TRIPS AND PASSENGERS⁽¹⁾ TRANSPORTED WITHIN OSTANS BY DIFFERENT TYPES OF PUBLIC ROAD PASSENGER VEHICLES

Year and Ostan	Number of trips (1000 cases)				Passengers transported (1000 persons)			
	Total	Bus	Minibus	Passenger car	Total	Bus	Minibus	Passenger car
1375.....	6587	1497	4706	385	127414	44897	80735	1782
1380.....	7886	1714	5087	1084	136563	44969	87034	4560
1385.....	10538	1760	4012	4766	130769	43901	67923	18945
1390.....	12742	1946	4257	6539	139935	49026	65139	25770
1391.....	12077	1691	3751	6635	128949	43600	59173	26176
1392.....	11549	1570	3415	6564	117798	39209	52259	26330
1393.....	11133	1476	3117	6540	107033	32599	47227	27207
1394.....	10287	1354	3002	5931	99867	30137	45407	24323
East Azarbayejan	438	117	107	214	4627	2170	1598	859
West Azarbayejan	566	143	150	273	4814	1958	1825	1031
Ardebil	192	12	9	171	999	180	104	715
Esfahan	765	96	388	281	10053	2533	6405	1115
Alborz.....	0	0	0	0	10	8	2	0
Ilam	185	2	7	176	856	69	88	699
Bushehr	130	23	46	61	1975	940	712	323
Tehran	141	14	59	68	1824	389	1151	284
Chaharmahal & Bakhtiari	389	2	211	176	4218	71	3442	705
South Khorasan	136	28	27	81	1342	745	285	312
Khorasan-e-Razavi.....	956	351	328	277	15056	8980	4887	1189
North Khorasan.....	233	8	90	135	2093	219	1305	569
Khuzestan.....	842	56	109	677	6388	1891	1803	2694
Zanjan	154	1	29	124	859	40	318	501
Semnan	100	10	15	75	591	132	160	299
Sistan & Baluchestan	468	108	207	153	3843	1730	1492	621
Fars	834	202	163	469	8674	4226	2595	1853
Qazvin	123	1	35	87	993	35	610	348
Qom.....	18	2	15	1	309	72	231	6
Kordestan	395	11	133	251	3085	181	1961	943
Kerman	609	84	27	498	4177	1803	403	1971
Kermanshah	328	2	163	163	3853	54	2801	998
Kohgiluyeh & Boyerahmad	151	15	2	134	645	106	24	515
Golestan	285	0	172	113	3435	9	2974	452
Gilan.....	489	2	121	366	3481	65	1939	1477
Lorestan	290	2	128	160	2781	60	2086	635
Mazandaran	368	2	44	322	2035	44	689	1302
Markazi	107	7	36	64	1090	122	561	407
Hormozgan	105	2	5	98	479	29	65	385
Hamedan	462	31	171	260	4901	919	2865	1117
Yazd	24	20	3	1	385	359	25	1

1. Relating to the number of passengers registered by passenger transportation companies.

Source: Ministry of Roads Urban Development.

12.7. TRIPS AND PASSENGERS⁽¹⁾ TRANSPORTED BETWEEN OSTANS BY DIFFERENT TYPES OF PUBLIC ROAD PASSENGER VEHICLES AND OSTAN OF ORIGIN

Year and Ostan	Number of trips (1000 cases)				Passengers transported (1000 persons)			
	Total	Bus	Minibus	Passenger car	Total	Bus	Minibus	Passenger car
1375.....	4084	2795	1052	238	85298	66228	17935	1134
1380.....	4796	3322	935	539	84481	66259	15881	2340
1385.....	5946	3457	694	1795	93186	74075	12004	7107
1390.....	6318	3470	690	2158	95853	76725	10640	8488
1391.....	6337	3354	636	2347	96600	77239	10136	9226
1392.....	6249	3392	558	2299	93481	75772	8588	9120
1393.....	5738	3129	445	2164	83105	67547	6790	8769
1394.....	5772	3215	423	2134	79081	64240	6334	8507
East Azarbayejan	202	141	9	52	2646	2294	146	206
West Azarbayejan	195	113	37	45	2311	1758	281	272
Ardebil	103	65	2	36	1236	1073	25	138
Esfahan	419	280	42	97	6817	5848	600	369
Alborz	130	100	2	28	2205	2073	23	109
Ilam	78	28	3	47	1225	993	48	184
Bushehr	70	57	3	10	1209	1115	52	42
Tehran	1292	864	16	412	19560	17795	229	1536
Chaharmahal & Bakhtiyari	129	42	16	71	1648	1112	251	285
South Khorasan	60	43	7	10	978	856	84	38
Khorasan-e-Razavi.....	249	203	14	32	4535	4188	209	138
North Khorasan.....	74	40	5	29	912	740	61	111
Khuzestan.....	178	91	7	80	2151	1727	106	318
Zanjan	102	54	6	42	1019	791	62	166
Semnan	113	38	6	69	1322	984	77	261
Sistan & Baluchestan	79	75	0	4	1116	1103	0	13
Fars	202	145	12	45	3741	3404	157	180
Qazvin	121	40	7	74	2000	1582	121	297
Qom.....	131	44	22	65	2013	1399	365	249
Kordestan	149	47	35	67	1582	742	580	260
Kerman	85	57	2	26	1178	1049	23	106
Kermanshah	160	55	29	76	1973	1164	469	340
Kohgiluyeh & Boyerahmad	91	18	3	70	625	316	33	276
Golestan	134	65	29	40	1549	884	511	154
Gilan.....	244	112	19	113	2412	1656	326	430
Lorestan	151	74	15	62	1994	1517	232	245
Mazandaran	379	77	26	276	2756	1275	438	1043
Markazi	146	70	16	60	2024	1449	290	285
Hormozgan	63	40	2	21	843	744	19	80
Hamedan	189	82	32	75	2555	1680	500	375
Yazd	59	56	1	2	949	930	16	3

1. Relating to the number of passengers registered by passenger transportation companies.

Source: Ministry of Roads and Urban Development.

12. 8. WEIGHT OF FREIGHT ⁽¹⁾ CARRIED BY PUBLIC ROAD FREIGHTVEHICLES(1000 tons)

Year and Ostan	Outgoing	Incoming	Carried within Ostan
1375.....	76869	76869	27571
1380.....	108354	108354	40546
1385.....	184724	184724	88876
1390.....	251480	251480	104343
1391.....	264662	264662	109841
1392.....	268848	268848	112086
1393.....	272941	272941	112129
1394.....	258868	258868	101087
East Azarbayejan.....	9408	9673	5238
West Azarbayejan.....	4859	5272	4360
Ardebil.....	2293	2129	1215
Esfahan.....	29877	20846	11369
Alborz.....	4374	7818	1784
Ilam.....	1586	3130	1148
Bushehr.....	4740	4772	1604
Tehran.....	22781	37865	5618
Chaharmahal & Bakhtiari.....	2463	2066	639
South Khorasan.....	2651	3424	1090
Khorasan-e-Razavi.....	14118	12575	10429
North Khorasan.....	2532	1882	772
Khuzestan.....	28249	22874	8253
Zanjan.....	3505	3011	1777
Semnan.....	7561	3143	1170
Sistan & Baluchestan.....	1559	5888	4416
Fars.....	14931	11623	9054
Qazvin.....	6507	7299	665
Qom.....	4255	5118	397
Kordestan.....	3460	3659	1594
Kerman.....	13524	7666	3594
Kermanshah.....	3675	9029	3821
Kohgiluyeh & Boyerahmad.....	342	1415	157
Golestan.....	3984	4353	1366
Gilan.....	5201	6467	2693
Lorestan.....	3284	2778	1446
Mazandaran.....	6884	11197	6130
Markazi.....	14126	6965	1557
Hormozgan.....	13821	22312	4239
Hamedan.....	7228	4442	1939
Yazd.....	15092	8178	1555

1. Relating to volume of freight for transportation of which a bill of loading was issued.

Source: Ministry of Roads and Urban Development.

**12. 9. NUMBER AND CAPACITY OF SHIPS OF THE I. R. I. SHIPPING COMPANY AND
AFFILIATED COMPANIES AT THE END OF THE YEAR (ships, tons, persons)**

Year and type of ship	Total			I.R.I. Shipping Co.		Iran-India Shipping Co.	
	Number	Capacity		Number	Cargo capacity	Number	Cargo capacity
		Cargo	Passenger				
1375.....	101	2472434	2958	73	2220590	10	226211
1380.....	112	3068859	2630	85	2835484	8	204258
1385.....	115	3732999	1993	85	3343316	7	335385
1390.....	136	5296260	1868	93	4497262	7	642942
1391.....	134	5122430	1843	89	4315177	7	642942
1392.....	124	4490077	1843	77	3815420	6	502081
1393.....	128	4479999	1843	82	4171053	3	130798
1394.....	130	4927792	1843	84	4462804	4	289615
Bulk carrier (dry)	37	2226989	0	34	2096191	3	130798
General cargo vessel	5	147306	0	5	147306	0	0
Oil tanker.....	9	879029	0	8	720212	1	158817
Multi-purpose carrier	38	442415	0	15	349086	0	0
Container carrier	31	1229016	0	22	1150009	0	0
Passenger ferry.....	8	1591	1081	0	0	0	0
Ro-Ro passenger ship.....	2	1446	762	0	0	0	0

Year and type of ship	Valfajr 8 Shipping Co.			The Caspian Sea Shipping Co.		
	Number	Capacity		Number	Capacity	
		Cargo	Passenger		Cargo	Passenger
1375.....	13	8943	2764	5	16690	194
1380.....	13	5587	2630	6	23530	0
1385.....	16	22508	1993	7	31790	0
1390.....	20	82114	1868	16	73942	0
1391.....	19	82044	1843	19	82267	0
1392.....	19	82044	1843	22	90532	0
1393.....	19	82044	1843	24	96104	0
1394.....	19	82044	1843	23	93329	0
Bulk carrier (dry)	0	0	0	0	0	0
General cargo vessel	0	0	0	0	0	0
Oil tanker.....	0	0	0	0	0	0
Multi-purpose carrier	0	0	0	23	93329	0
Container carrier	9	79007	0	0	0	0
Passenger ferry.....	8	1591	1081	0	0	0
Ro-Ro passenger ship.....	2	1446	762	0	0	0

Source: I. R. I. Shipping Co.

12.10. VESSELS WITH THE CAPACITY OF 1000 AND OVER TONS ENTERED BY COMMERCIAL PORTS (ship)

Year	Grand total	Southern ports			
		Total	Abadan	Emam Khomeini ⁽¹⁾	Bushehr
1375.....	3334	2199	0	675	148
1380.....	5530	3984	38	1092	161
1385.....	9169	5889	6	1429	477
1390.....	9172	6393	0	1641	624
1391.....	8808	6386	0	1737	499
1392.....	8512	6750	0	1739	503
1393.....	9196	7270	0	1815	496
1394.....	9028	7082	1	1715	557

Year	Southern ports				
	Shahid Bahonar and Shahid Rajaei	Shahid Beheshti (Chahbahar) ⁽²⁾	Shahid Kalantari ⁽²⁾	Khoramshahr	Lengeh
1375.....	1325	51	0	0	0
1380.....	2201	50	5	51	386
1385.....	3403	57	27	236	254
1390.....	3336	98	000	563	131
1391.....	3215	104	000	618	213
1392.....	3665	102	000	546	195
1393.....	3665	168	000	694	432
1394.....	3651	139	000	537	482

Year	Northern ports				
	Total	Amirabad	Anzali	Neka	Noshahr
1375.....	1135	0	690	0	445
1380.....	1546	51	898	83	514
1385.....	3280	203	1365	1294	418
1390.....	2779	718	1675	93	293
1391.....	2422	854	1186	80	302
1392.....	1762	789	705	48	220
1393.....	1926	813	800	47	266
1394.....	1946	789	804	50	303

1. Including ships entered Mahshahr port.

2. Including the data for Shahid Kalantari Port as of the year 1389.

Source: Ports and Maritime Organization.

12.11. WEIGHT OF CARGO UNLOADED FROM VESSELS OF 1000 AND MORE TONS AT COMMERCIAL PORTS (1000 tons)

Year	Southern ports									
	Total		Abadan		Emam Khomeini		Bushehr		Shahid Bahonar and Shahid Rajaei (Bandar abbas)	
	Oil	Non-oil	Oil	Non-oil	Oil ⁽¹⁾	Non-oil	Oil	Non-oil	Oil	Non-oil
1375.....	6807	19866	0	0	637	8545	770	372	5089	10389
1380.....	17593	23815	149	//	815	12048	1198	288	14949	10827
1385.....	23880	33332	0	0	1652	15588	1177	840	20074	15982
1390.....	19747	36960	0	0	211	12940	1441	1750	16946	21468
1391.....	20670	40959	0	1	189	18256	1281	1540	18129	20384
1392.....	23226	34645	0	0	1149	14659	1594	2092	19265	17282
1393.....	22125	42366	0	0	1409	19792	1390	2465	17993	19026
1394.....	32089	19891	0	0	933	16668	1073	1636	16743	13138

Year	Southern ports							
	Shahid Beheshti ⁽²⁾		Shahid Kalantari ⁽²⁾		Khoramshahr		Lengeh	
	Oil	Non-oil	Oil	Non-oil	Oil	Non-oil	Oil	Non-oil
1375.....	310	0	0	561	0	0	0	0
1380.....	482	476	0	2	0	127	0	47
1385.....	978	356	0	238	0	317	0	11
1390.....	1143	278	000	000	6	513	0	11
1391.....	1069	376	0	0	2	386	0	16
1392.....	1218	217	0	0	0	367	0	28
1393.....	1334	619	000	000	0	414	0	51
1394.....	1140	338	000	000	2	261	0	48

Year	Northern ports									
	Total		Amirabad		Anzali		Noshahr		Neka	
	Oil	Non-oil	Oil	Non-oil	Oil	Non-oil	Oil	Non-oil	Oil	Non-oil
1375.....	2542	1434	0	0	1154	1136	1388	298	0	0
1380.....	432	3923	0	110	//	2559	122	1242	310	12
1385.....	7407	5189	8	615	395	3812	555	763	6449	//
1390.....	858	6906	68	1388	444	4802	4	716	342	0
1391.....	632	5412	33	1508	330	3111	19	793	250	0
1392.....	373	3075	54	1074	157	1481	56	519	106	1
1393.....	377	4350	68	1647	103	2069	67	634	139	0
1394.....	465	4719	104	1916	216	1971	19	832	125	0

1. Unloading of oil products relates to Mahshar port which was included in Emam Khomeini port.

2. Including the data for Shahid Kalantari Port as of the year 1389.

Source: Ports and Maritime Organization.

12.12. WEIGHT OF CARGO LOADED ONTO VESSELS OF 1000 AND MORE TONS AT COMMERCIAL PORTS (1000 tons)

Year	Southern ports									
	Total		Abadan		Emam Khomeini		Bushehr		Shahid Bahonar and Shahid Rajaei (Bandar abbas)	
	Oil	Non-oil	Oil	Non-oil	Oil ⁽¹⁾	Non-oil	Oil	Non-oil	Oil	Non-oil
1375.....	14480	5446	0	0	14070	3353	175	79	236	2013
1380.....	17997	8885	0	0	11252	4601	76	21	6669	4070
1385.....	14871	17118	11	0	9104	4885	239	93	5516	12074
1390.....	20992	34550	0	0	12643	9494	386	474	7930	24134
1391.....	16877	38260	0	0	11723	9437	309	295	4800	27942
1392.....	19849	41984	0	0	14040	7665	455	383	5352	33573
1393.....	21063	40241	0	0	14880	8789	380	649	5802	30064
1394.....	24982	36842	0	0	17069	7980	421	815	7489	27397

Year	Southern ports								
	Shahid Beheshti ⁽²⁾		Shahid Kalantari ⁽²⁾		Khoramshahr		Lengeh		
	Oil	Non-oil	Oil	Non-oil	Oil	Non-oil	Oil	Non-oil	
1375.....	0	0	0	0	0	0	0	0	0
1380.....	0	63	0	16	0	14	0	101	
1385.....	0	0	0	0	0	22	0	44	
1390.....	0	10	000	000	33	426	0	12	
1391.....	0	34	0	0	45	497	0	55	
1392.....	2	83	0	0	0	219	0	61	
1393.....	0	129	000	000	0	526	0	83	
1394.....	0	186	000	000	2	399	0	65	

Year	Northern ports									
	Total		Amirabad		Anzali		Noshahr		Neka	
	Oil	Non-oil	Oil	Non-oil	Oil	Non-oil	Oil	Non-oil	Oil	Non-oil
1375.....	0	101	0	0	0	73	0	28	0	0
1380.....	0	121	0	0	//	75	0	46	0	0
1385.....	0	248	0	7	0	159	0	82	0	0
1390.....	37	1609	3	1408	0	177	0	24	34	0
1391.....	0	2302	0	1980	0	296	0	26	0	0
1392.....	1	2844	0	2291	0	529	0	24	1	0
1393.....	0	2219	0	1764	0	416	0	39	0	0
1394.....	0	986	0	860	0	108	0	18	0	0

1. Including statistics on Mahshahr port.

2. Including the data for Shahid Kalantari Port as of the year 1389.

Source: Ports and Maritime Organization.

12. 13. CARGO TRANSPORTED BY I. R. I. SHIPPING COMPANY AND IRAN-INDIA SHIPPING COMPANY
(1000 tons chartered)

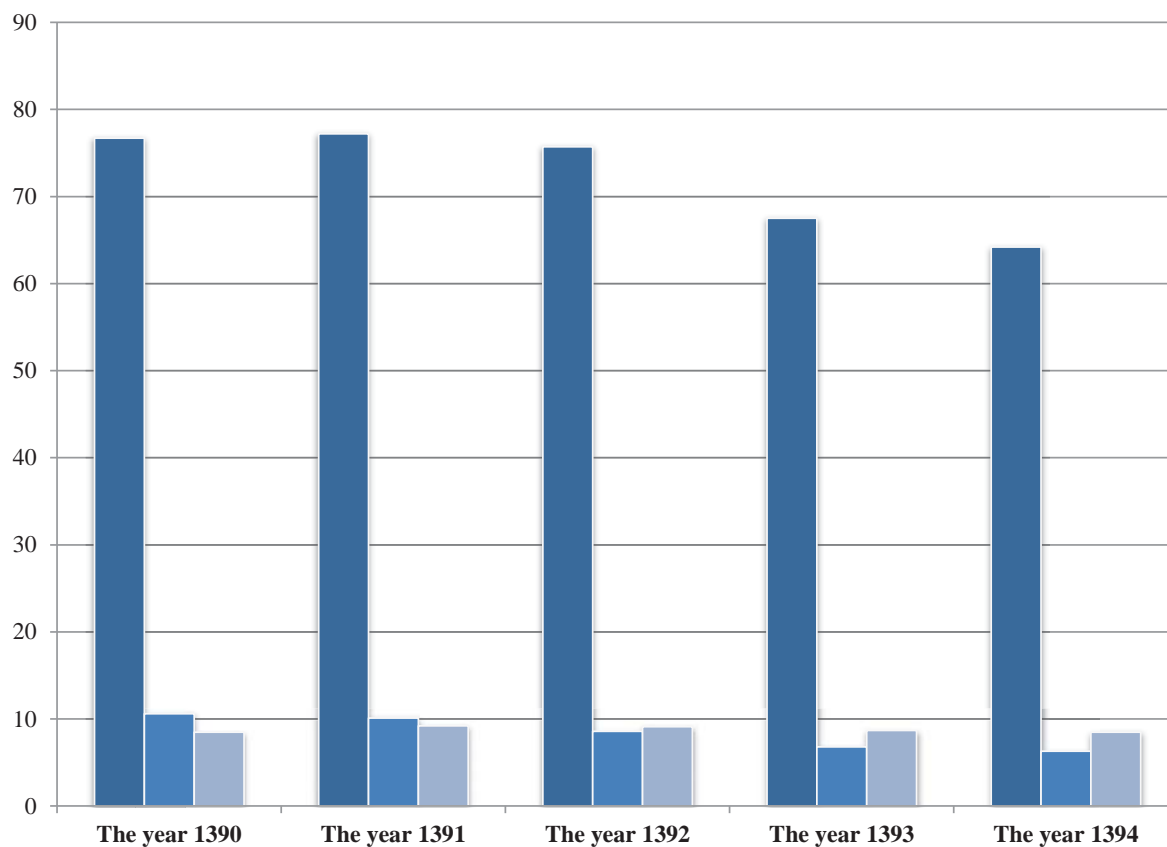
Description	I.R.I. Shipping Co.			Iran-India Shipping Co.		
	Total	By ships of the company	By chartered ships	Total	By ships of the company	By chartered ships
<i>Loading at foreign ports</i>						
1375.....	14148	9603	4545	395	199	196
1380.....	13217	9835	3382	34	20	14
1385.....	18246	16988	1258	2501	2501	0
1390.....	15325	14900	425	1449	1449	0
1391.....	11139	10932	207	1324	1324	0
1392.....	11942	11622	320	182	182	0
1393.....	15782	15659	123	0	0	0
1394.....	13275	13012	263	0	0	0
<i>Unloading at domestic ports</i>						
1375.....	13299	9255	4044	387	214	173
1380.....	13342	9654	3688	34	20	14
1385.....	11055	10172	882	0	0	0
1390.....	6392	6028	364	113	113	0
1391.....	4390	4199	191	114	114	0
1392.....	7712	7394	318	65	65	0
1393.....	9438	9316	122	0	0	0
1394.....	5777	5748	29	0	0	0
<i>Exports (loading at domestic ports)</i>						
1375.....	105	88	17	0	0	0
1380.....	1961	1936	25	31	31	0
1385.....	3929	3733	195	136	136	0
1390.....	4866	4715	151	718	718	0
1391.....	3609	3503	106	340	340	0
1392.....	6680	6574	106	689	689	0
1393.....	7064	6984	80	409	409	0
1394.....	9758	9716	42	0	0	0
<i>Unloading at foreign ports</i>						
1375.....	163 ⁽¹⁾	000 ⁽¹⁾	000 ⁽¹⁾	0	0	0
1380.....	1950	1926	24	31	31	0
1385.....	11120	10549	571	2602	2602	0
1390.....	13800	13587	213	2054	2054	0
1391.....	10359	10236	123	1551	1551	0
1392.....	10909	10802	107	806	806	0
1393.....	13903	13822	81	409	409	0
1394.....	17421	17146	275	0	0	0

1. Volume of the cargo unloaded by chartered ships not available separately is included with the ships of the company.

Source: I. R. I. Shipping Co.

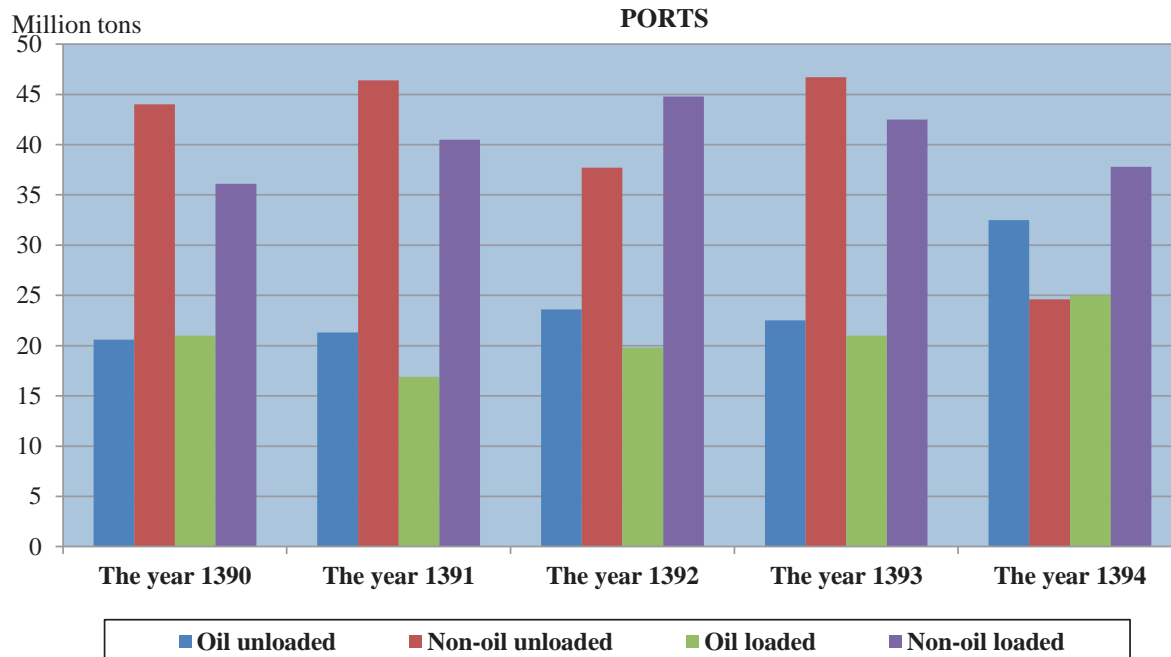
12.1 . NUMBER OF PASSENGERS TRANSPORTED BETWEEN OSTANS BY DIFFERENT TYPES OF PUBLIC ROAD PASSENGER VEHICLES

Million persons



For data see Table 12.7.

12.2. WEIGHT OF CARGO UNLOADED AND LOADED AT COMMERCIAL PORTS



For data see Tables 12.11 and 12.12.

12. 14. PASSENGERS AND CARGO TRANSPORTED BY VALFAJR 8 SHIPPING CO.⁽¹⁾ AND THE CASPIAN SEA SHIPPING CO.⁽²⁾ (1000 tons chartered; 1000 persons)

Year	Valfajr 8 Shipping Co.						The Caspian Sea Shipping Co.	
	Total		Cargo		Passenger		Cargo	Passenger
	Cargo	Passenger	Domestic journeys	Overseas journeys	Domestic journeys	Overseas journeys		
1375.....	430	413	24	406	311	102	281	4
1380.....	461	463	269	192	356	107	688	0
1385.....	308	217	82	226	204	13	933	0
1390.....	1785	335	822	963	244	91	1723	0
1391.....	2087	540	1247	831	452	88	1779	0
1392.....	3097	520	1468	1629	430	90	1952	0
1393.....	2386	310	1471	915	208	102	2136	0
1394.....	2228	241	1224	1004	147	94	1881	0

1. This company's liners travel between southern Iranian ports and islands or between southern Iranian ports and Persian Gulf coastal states.

2. This company's liners travel between northern Iranian ports and the Caspian Sea coastal states

Source: I. R. I. Shipping Co

12.15. PASSENGERS ARRIVING AT AND DEPARTING FROM AIRPORTS BY DOMESTIC AND INTERNATIONAL FLIGHTS
(1000 persons)

Year	Departure			Arrival		
	Total	Domestic	International	Total	Domestic	International
1375.....	9306	8363	943	9250	8363	886
1380.....	10101	8564	1537	10039	8564	1475
1385.....	15286	12423	2862	15245	12423	2822
1390.....	20885	16481	4404	20860	16481	4379
1391.....	20793	16655	4138	20734	16655	4079
1392.....	19687	16617	3070	19618	16617	3001
1393.....	22822	17462	5360	22812	17462	5350
1394.....	23584	18252	5332	23546	18252	5294

Source: Civil Aviation Organization.

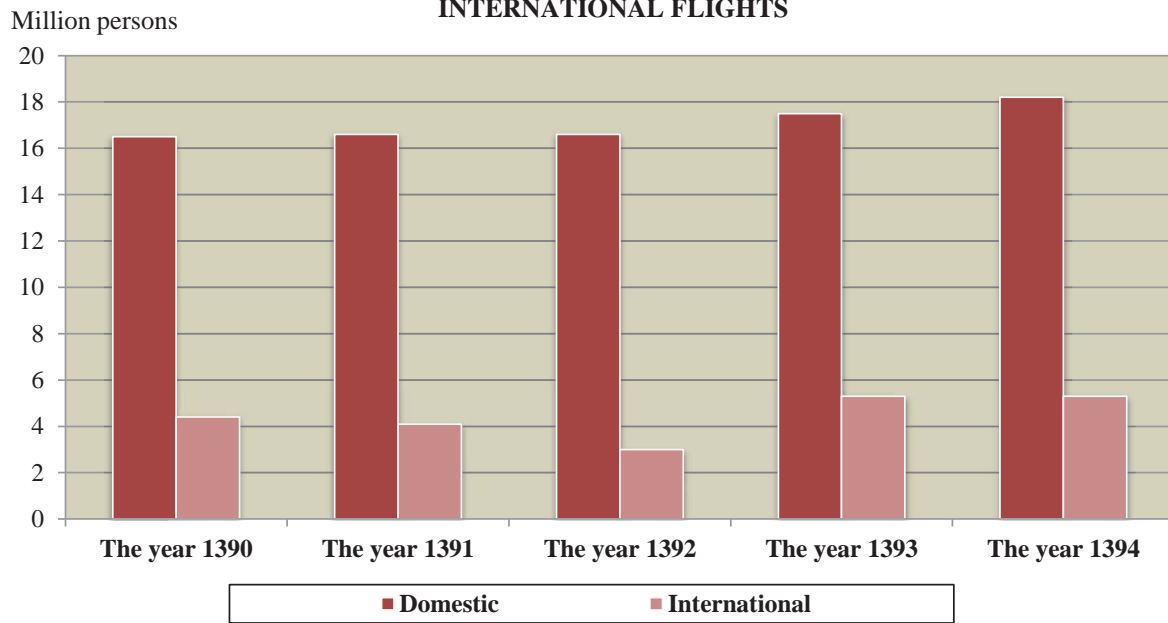
12.16. PASSENGERS ON INTERNATIONAL FLIGHTS TRANSPORTED BY DOMESTIC AND FOREIGN AIRLINES
(1000 persons)

Description	The year 1375		The year 1380		The year 1385		The year 1390	
	Departure	Arrival	Departure	Arrival	Departure	Arrival	Departure	Arrival
Total	943	886	1537	1475	2862	2822	4404	4379
Domestic airlines	729	680	1160	1119	1942	1921	2566	2536
Foreign airlines	214	207	376	356	921	901	1837	1842

Description	The year 1391		The year 1392		The year 1393		The year 1394	
	Departure	Arrival	Departure	Arrival	Departure	Arrival	Departure	Arrival
Total	4139	4080	4626	4503	5360	5350	5332	5294
Domestic airlines	2526	2483	3070	3001	3354	3360	3167	3161
Foreign airlines	1613	1597	1556	1502	2006	1990	2165	2133

Source: Civil Aviation Organization.

12.3. NUMBER OF IN-COMING PASSENGERS ON DOMESTIC & INTERNATIONAL FLIGHTS



For data see Table 12.15.

12.17. PASSENGERS ON FLIGHTS OF DOMESTIC AIRLINES BY AIRPORT⁽¹⁾ (1000 persons)

Ostan and airport	The year 1375		The year 1380		The year 1385		The year 1390	
	Departure	Arrival	Departure	Arrival	Departure	Arrival	Departure	Arrival
Total	8363	8363	8564	8564	12423	12423	16476	16476
East Azarbajejan								
Tabriz	300	295	273	275	390	395	535	536
Sahand.....	4	4	3	3	3	3	1	1
West Azarbajejan								
Orumiyeh	107	108	110	108	134	131	121	123
Khoy.....	×	×	×	×	×	×	6	5
Ardebil								
Ardebil	40	40	42	43	89	88	128	124
Parsabad	2	2	2	2	3	2	5	4
Esfahan								
Esfahan.....	525	543	516	524	664	666	729	752
Ilam								
Ilam	8	7	7	8	18	18	69	67
Bushehr								
Bahrgan	3	3	2	2	3	3	10	8
Bushehr	136	135	125	123	150	148	177	174
Khark.....	34	28	47	40	78	77	83	83
Asaluyeh.....	0	0	21	19	282	276	317	317
Tohid.....	20	18	9	8	15	15	13	11
Tehran								
Emam Khomeini	×	×	×	×	×	×	0	1
Mehrabad	3384	3391	3441	3476	5047	5062	6220	6288
Chaharmahal & Bakhtiyari								
Shahr-e-Kord.....	0	0	11	12	7	9	7	8
South Khorasan								
Birjand.....	6	6	6	7	43	43	49	51
Khorasan-e-Razavi								
Sabzevar	×	×	×	×	×	×	19	20
Mashhad.....	873	883	1033	1026	1457	1486	2472	2438
North Khorasan								
Bojnourd.....	0	0	4	4	7	7	19	18
Khuzestan								
Abadan	105	104	108	106	124	126	162	163
Aghajari.....	×	×	×	×	×	×	7	5
Ahvaz	394	390	455	454	691	692	901	900
Behbahan.....	1	1	0	0	0	0	0	0
Dezful.....	3	3	//	//	17	17	58	57
Mahshahr.....	40	38	52	48	137	135	106	101
Zanjan								
Zanjan	×	×	×	×	×	×	9	9
Semnan								
Shahrud	0	0	0	0	0	0	0	0
Sistan & Baluchestan								
Iranshahr.....	5	5	4	4	5	6	8	8
Chabahar	58	64	76	72	91	85	78	82

12. 17. PASSENGERS ON FLIGHTS OF DOMESTIC AIRLINES BY AIRPORT⁽¹⁾ (continued)
(1000 persons)

Ostan and airport	The year 1375		The year 1380		The year 1385		The year 1390	
	Departure	Arrival	Departure	Arrival	Departure	Arrival	Departure	Arrival
Zabol	4	3	4	2	16	12	7	7
Zahedan	148	145	139	140	172	162	249	229
Saravan	×	×	×	×	×	×	0	0
<i>Fars</i>								
Jahrom	3	1	//	//	0	0	0	0
Shiraz	633	660	615	620	835	842	977	982
Lar	25	23	11	12	9	10	13	12
Lamerd	11	10	7	6	14	14	0	0
<i>Kordestan</i>								
Sanandaj	11	11	14	15	27	29	41	43
<i>Kerman</i>								
Bam	3	2	6	5	23	24	5	7
Jiroft	1	1	//	//	0	0	0	0
Rafsanjan	26	23	8	9	6	6	0	0
Sirjan	4	5	4	4	11	10	5	5
Kerman	215	208	193	191	218	215	337	332
<i>Kermanshah</i>								
Kermanshah	105	111	169	176	230	228	260	257
<i>Kohgiluyeh & Boyerahmad</i>								
Gachsaran	×	×	×	×	×	×	×	×
Yasuj	×	×	×	×	×	×	16	15
<i>Golestan</i>								
Gorgan	0	0	8	8	33	31	108	109
<i>Gilan</i>								
Rasht	70	73	59	60	64	65	147	148
<i>Lorestan</i>								
Khorramabad	10	10	16	19	20	24	14	14
<i>Mazandaran</i>								
Ramsar	5	5	5	5	9	9	15	15
Sari	21	21	27	27	27	30	62	65
Noshahr	1	2	//	0	8	7	15	15
<i>Markazi</i>								
Arak	×	×	×	×	×	×	4	4
<i>Hormozgan</i>								
Abumusa	4	4	1	1	11	10	15	15
Bandar Abbas	389	348	271	256	343	332	503	497
Bandar-e-Lengeh	36	35	23	20	17	15	15	14
Siri	14	12	21	19	32	22	36	27
Qeshm	0	0	20	16	35	38	84	76
Kish	413	434	438	444	608	607	999	1005
Lavan	30	22	34	26	28	27	38	30
<i>Hamedan</i>								
Hamedan	5	5	3	4	2	3	11	11
<i>Yazd</i>								
Tabas	1	1	1	2	0	0	2	2
Yazd	125	120	119	110	135	133	188	187

12.17. PASSENGERS ON FLIGHTS OF DOMESTIC AIRLINES BY AIRPORT⁽¹⁾ (continued)

Ostan and airport	The year 1391		The year 1392		The year 1393		The year 1394	
	Departure	Arrival	Departure	Arrival	Departure	Arrival	Departure	Arrival
Total	16654	16654	16617	16617	17462	17462	18253	18253
East Azarbayejan								
Tabriz	507	503	495	496	569	580	558	618
Sahand.....	-	-	0	0	1	0	0	0
West Azarbayejan								
Orumiyeh	133	134	148	151	144	145	162	161
Khoy.....	5	5	3	2	0	0	6	6
Ardebil								
Ardebil	107	106	91	91	83	83	95	92
Parsabad	3	2	-	-	-	-	-	-
Esfahan								
Esfahan.....	747	771	766	787	801	814	829	843
Ilam								
Ilam	67	66	64	63	66	64	65	60
Bushehr								
Bahrgan	11	9	13	11	14	12	12	10
Bushehr	182	182	172	174	158	157	163	162
Khark.....	94	93	97	96	96	95	83	85
Asaluyeh.....	372	371	348	345	367	364	393	391
Tohid.....	10	7	9	7	9	8	2	2
Tehran								
Emam Khomeini	1	1	0	0	3	0	0	0
Mehrabad	6209	6232	6112	6117	6398	6428	6704	6675
Chaharmahal & Bakhtiari								
Shahr-e-Kord.....	7	8	2	2	6	7	4	7
South Khorasan								
Birjand.....	48	49	44	44	44	44	45	45
Khorasan-e-Razavi								
Sabzevar	21	22	14	15	11	11	7	7
Mashhad.....	2669	2665	2768	2771	2986	2992	3145	3145
North Khorasan								
Bojnourd.....	17	17	21	21	17	17	19	21
Khuzestan								
Abadan	124	124	178	178	216	208	251	248
Aghajari.....	7	6	8	6	8	6	9	7
Ahvaz	944	946	916	917	975	974	1047	1047
Behbahan.....	0	0	0	0				
Dezful.....	56	57	68	69	52	52	59	59
Mahshahr.....	112	111	83	81	86	83	89	87
Zanjan								
Zanjan	13	12	10	10	8	9	6	6
Semnan								
Shahrud	-	0	0	0	0	0	2	3
Sistan & Baluchestan								
Iranshahr.....	13	13	13	13	12	12	5	3
Chabahar	78	78	63	64	70	67	78	75

12.17. PASSENGERS ON FLIGHTS OF DOMESTIC AIRLINES BY AIRPORT⁽¹⁾ (continued)
(1000 persons)

Ostan and airport	The year 1391		The year 1392		The year 1393		The year 1394	
	Departure	Arrival	Departure	Arrival	Departure	Arrival	Departure	Arrival
Zabol	10	10	10	10	9	9	13	18
Zahedan	222	206	198	184	205	196	200	190
Saravan	0	0	0	0	0	1	0	0
Fars								
Jahrom	-	-	0	0	0	0	0	0
Shiraz	965	965	942	948	958	983	1100	1129
Lar	12	12	12	12	14	13	15	14
Lamerd	11	10	10	10	9	10	5	8
Kordestan								
Sanandaj	44	47	36	40	28	31	28	31
Kerman								
Bam	5	6	2	4	5	6	5	5
Jiroft	0	0	0	0	3	3	4	4
Rafsanjan	-	-	7	7	9	9	8	9
Sirjan	6	6	10	11	12	12	12	13
Kerman	332	327	310	306	349	344	336	330
Kermanshah								
Kermanshah	218	216	201	200	213	206	191	188
Kohgiluyeh & Boyerahmad								
Gachsaran	×	×	×	×	×	×	3	4
Yasuj	11	12	11	11	6	7	13	14
Golestan								
Gorgan	90	92	82	83	73	72	75	76
Gilan								
Rasht	131	131	140	142	139	141	144	144
Lorestan								
Khorrarnabad	18	15	22	21	41	40	35	33
Mazandaran								
Ramsar	18	17	20	19	12	11	16	16
Sari	73	77	91	98	105	108	104	109
Noshahr	16	15	15	15	13	13	16	16
Markazi								
Arak	0	0	0	0	3	3	6	6
Hormozgan								
Abumusa	19	20	17	18	10	16	13	14
Bandar Abbas	459	456	435	423	437	423	425	416
Bandar-e-Lengeh	13	13	13	13	11	11	12	12
Siri	30	25	32	30	31	27	32	26
Qeshm	91	88	134	128	160	152	166	156
Kish	1084	1085	1107	1103	1131	1103	1139	1116
Lavan	32	31	39	39	34	32	35	31
Hamedan								
Hamedan	4	3	8	7	11	11	13	13
Yazd								
Tabas	2	3	2	2	2	2	3	3
Yazd	181	176	198	196	227	227	245	245

1. Figures relating to such airports which have transported less passengers, are included in the total.

Source: Civil Aviation Organization.

12. 18. PASSENGERS ON INTERNATIONAL FLIGHTS OF DOMESTIC⁽¹⁾ AIRLINES BY DOMESTIC AND OVERSEAS AIRPORTS

Description	The year 1375		The year 1380		The year 1385		The year 1390	
	Departure	Arrival	Departure	Arrival	Departure	Arrival	Departure	Arrival
Total	1275	1275	2018	2018	2609	2558	4404	4377
Domestic airports	643	621	979	985	1272	1256	4404	4377
Abadan	2	2	3	4	0	0	5	5
Ardebil	000	000	000	000	000	000	10	10
Orumiyeh	0	0	3	3	1	1	15	14
Esfahan.....	34	33	45	65	65	65	209	198
Emam Khomeini	×	×	×	×	210	206	2391	2338
Ahvaz	7	6	15	16	24	22	63	61
Bandar Abbas.....	44	48	25	26	32	32	57	55
Bushehr	3	7	16	15	18	17	15	15
Tabriz	12	9	13	13	24	24	139	142
Tehran	422	402	602	584	545	540	390	376
Chabahar	000	000	000	000	000	000	6	6
Rasht	0	0	4	4	0	0	22	22
Zahedan.....	3	3	2	3	1	1	23	23
Sari	0	0	14	18	16	16	74	75
Shiraz	80	74	98	91	113	119	155	202
Qeshm	000	000	000	000	000	000	23	24
Kerman.....	//	//	11	8	3	3	50	50
Kermanshah	0	0	2	3	1	1	24	24
Kish.....	000	000	000	000	000	000	95	90
Lar	19	20	31	28	30	28	38	37
Lamerd	//	1	10	10	10	10	8	7
Mashhad.....	16	16	75	82	123	113	506	519
Yazd	0	0	8	8	7	7	46	46
Other	0	0	1	4	49	51	40	38
Overseas airports	632	654	1039	1033	1337	1302	000	000
Athens	2	2	0	0	0	0	000	000
Almati	4	4	3	3	0	0	000	000
Arlanda.....	6	6	14	15	20	20	000	000
Amsterdam.....	9	10	26	27	26	28	000	000
Ankara.....	000	000	000	000	000	000	000	000
Abu Dhabi.....	3	3	0	0	1	1	000	000
Urumchi	000	000	000	000	000	000	000	000
Istanbul.....	23	27	18	19	34	35	000	000
Yerevan	000	000	000	000	000	000	000	000
Stockholm	000	000	000	000	000	000	000	000
Baku	8	9	1	2	5	5	000	000
Bangkok	000	000	000	000	000	000	000	000
Bahrain.....	5	5	27	26	29	29	000	000

12. 18. PASSENGERS ON INTERNATIONAL FLIGHTS OF DOMESTIC⁽¹⁾ AIRLINES BY DOMESTIC AND OVERSEAS AIRPORTS (continued) (1000 persons)

Description	The year 1375		The year 1380		The year 1385		The year 1390	
	Departure	Arrival	Departure	Arrival	Departure	Arrival	Departure	Arrival
Baghdad	000	000	000	000	000	000	000	000
Mumbai	10	11	9	10	19	19	000	000
Beirut.....	000	000	000	000	000	000	000	000
Paris.....	13	14	21	21	15	16	000	000
Beijing.....	10	11	17	17	20	22	000	000
Tashkent.....	3	4	3	3	4	4	000	000
Tokyo	13	11	16	16	13	11	000	000
Jiddah	134	135	300	269	293	211	000	000
Dhaka	0	0	12	8	0	0	000	000
Dhamam.....	000	000	000	000	000	000	000	000
Damascus	41	42	26	26	38	40	000	000
Dubai	141	146	279	287	426	383	000	000
Dusseldorf.....	000	000	000	000	000	000	000	000
Dushanbe.....	000	000	000	000	000	000	000	000
Delhi.....	000	000	000	000	000	000	000	000
Doha.....	12	14	18	18	17	16	000	000
Rome	8	8	9	9	6	5	000	000
Geneva	3	3	3	3	5	6	000	000
Sabiha.....	000	000	000	000	000	000	000	000
Sharjah	22	19	8	8	2	1	000	000
Ashkhabad.....	2	2	1	3	0	0	000	000
Frankfurt.....	28	31	33	35	36	35	000	000
Kabul.....	000	000	000	000	000	000	000	000
Copenhagen.....	0	0	6	6	10	10	000	000
Cologne	000	000	000	000	000	000	000	000
Karachi	8	8	5	5	6	7	000	000
Kuala Lumpur	11	13	11	14	25	27	000	000
Kuwait.....	47	53	70	71	75	71	000	000
Kiev.....	000	000	000	000	000	000	000	000
Gothenburg.....	000	000	000	000	000	000	000	000
Larnaca.....	9	9	8	8	1	1	000	000
London	27	26	41	42	46	48	000	000
Madrid.....	2	2	2	2	0	0	000	000
Moscow.....	5	5	7	8	5	6	000	000
Muscat.....	000	000	000	000	000	000	000	000
Medina	000	000	000	000	000	000	000	000
Milan	000	000	000	000	000	000	000	000
Najaf.....	000	000	000	000	000	000	000	000
Vienna	6	6	6	7	7	10	000	000
Hamburg.....	12	13	13	13	21	20	000	000
Other	3	2	27	34	133	216	000	000

12. 18. PASSENGERS ON INTERNATIONAL FLIGHTS OF DOMESTIC⁽¹⁾ AIRLINES BY DOMESTIC AND OVERSEAS AIRPORTS (continued)
(1000 persons)

Description	The year 1391		The year 1392		The year 1393		The year 1394	
	Departure	Arrival	Departure	Arrival	Departure	Arrival	Departure	Arrival
Total	4140	4078	4626	4503	5360	5350	5294	5332
Domestic airports	4140	4078	4626	4503	5360	5350	5294	5332
Abadan	-	-	0	0	5	5	17	20
Ardebil	7	7	8	8	15	16	6	6
Orumiyeh	21	18	16	14	15	16	6	6
Esfahan.....	193	186	237	226	253	249	232	239
Emam Khomeini	2243	2201	2457	2388	3101	3052	3431	3452
Ahvaz	48	47	52	50	57	56	45	49
Bandar Abbas	45	44	38	37	38	37	36	37
Bushehr	10	11	13	12	13	13	4	4
Tabriz	110	111	118	115	129	129	107	109
Tehran	311	314	332	317	140	157	2	3
Chabahar	5	5	6	6	6	6	3	3
Rasht	20	20	13	13	17	18	2	2
Zahedan	15	15	14	14	16	16	11	11
Sari	66	66	104	99	105	113	30	30
Shiraz	181	182	174	173	230	233	223	219
Qeshm	8	9	27	28	34	36	48	47
Kerman	43	44	56	55	54	55	34	34
Kermanshah	18	19	18	20	24	24	12	13
Kish.....	102	104	119	120	131	133	142	139
Lar	37	34	40	38	41	38	52	57
Lamerd.....	6	5	4	4	4	3	3	3
Mashhad.....	566	552	693	685	833	848	814	813
Yazd	36	36	42	42	43	43	17	18
Other	49	48	44	41	56	56	17	18
Overseas airports	000	000	000	000	000	000	000	000
Athens	000	000	000	000	000	000	000	000
Almati	000	000	000	000	000	000	000	000
Arlanda (Sweden)	000	000	000	000	000	000	000	000
Amsterdam.....	000	000	000	000	000	000	000	000
Ankara.....	000	000	000	000	000	000	000	000
Abu Dhabi.....	000	000	000	000	000	000	000	000
Urumchi	000	000	000	000	000	000	000	000
Istanbul.....	000	000	000	000	000	000	000	000
Yerevan.....	000	000	000	000	000	000	000	000
Stockholm	000	000	000	000	000	000	000	000
Baku	000	000	000	000	000	000	000	000
Bangkok	000	000	000	000	000	000	000	000
Bahrain.....	000	000	000	000	000	000	000	000

12. 18. PASSENGERS ON INTERNATIONAL FLIGHTS OF DOMESTIC⁽¹⁾ AIRLINES BY DOMESTIC AND OVERSEAS AIRPORTS (continued)
(1000 persons)

Description	The year 1391		The year 1392		The year 1393		The year 1394	
	Departure	Arrival	Departure	Arrival	Departure	Arrival	Departure	Arrival
Baghdad	000	000	000	000	000	000	000	000
Mumbai	000	000	000	000	000	000	000	000
Beirut.....	000	000	000	000	000	000	000	000
Paris.....	000	000	000	000	000	000	000	000
Beijing.....	000	000	000	000	000	000	000	000
Tashkent.....	000	000	000	000	000	000	000	000
Tokyo.....	000	000	000	000	000	000	000	000
Jiddah.....	000	000	000	000	000	000	000	000
Dhaka.....	000	000	000	000	000	000	000	000
Dhamam.....	000	000	000	000	000	000	000	000
Damascus.....	000	000	000	000	000	000	000	000
Dubai.....	000	000	000	000	000	000	000	000
Dusseldorf.....	000	000	000	000	000	000	000	000
Dushanbe.....	000	000	000	000	000	000	000	000
Delhi.....	000	000	000	000	000	000	000	000
Doha.....	000	000	000	000	000	000	000	000
Rome.....	000	000	000	000	000	000	000	000
Geneva.....	000	000	000	000	000	000	000	000
Sabiha.....	000	000	000	000	000	000	000	000
Sharjah.....	000	000	000	000	000	000	000	000
Ashkhabad.....	000	000	000	000	000	000	000	000
Frankfurt.....	000	000	000	000	000	000	000	000
Kabul.....	000	000	000	000	000	000	000	000
Copenhagen.....	000	000	000	000	000	000	000	000
Cologne.....	000	000	000	000	000	000	000	000
Karachi.....	000	000	000	000	000	000	000	000
Kuala Lumpur.....	000	000	000	000	000	000	000	000
Kuwait.....	000	000	000	000	000	000	000	000
Kiev.....	000	000	000	000	000	000	000	000
Gothenburg.....	000	000	000	000	000	000	000	000
Larnaca.....	000	000	000	000	000	000	000	000
London.....	000	000	000	000	000	000	000	000
Madrid.....	000	000	000	000	000	000	000	000
Moscow.....	000	000	000	000	000	000	000	000
Muscat.....	000	000	000	000	000	000	000	000
Medina.....	000	000	000	000	000	000	000	000
Milan.....	000	000	000	000	000	000	000	000
Najaf.....	000	000	000	000	000	000	000	000
Vienna.....	000	000	000	000	000	000	000	000
Hamburg.....	000	000	000	000	000	000	000	000
Other.....	000	000	000	000	000	000	000	000

1. Statistics for the years 1375, and 1380 through 1385 include only Airline of the I.R.I. and Aseman Airline.

Source: Civil Aviation Organization.

12.19. HAJJ⁽¹⁾ PILGRIMS TRANSPORTED BY AIRLINES**(person)**

Year	Origin	Destination
1375.....	72521	72702
1380.....	88591	88666
1385.....	103133	103689
1390.....	98484	96265
1391.....	75895	75556
1392.....	64720	66285
1393.....	64506	64506
1394.....	64343	63835
Ardebil	492	448
Orumiyeh	2028	2013
Esfahan.....	5792	5793
Ahvaz	0	2962
Bandar Abbas	561	505
Bushehr	884	879
Tabriz	3605	3581
Tehran	19936	19884
Rasht	687	660
Zahedan.....	1065	1072
Zanjan.....	1185	1185
Sari	3235	3210
Shiraz	6614	3617
Kerman.....	2386	2382
Kermanshah	824	830
Gorgan.....	1804	1745
Mashhad	9211	9119
Hamedan.....	2281	2312
Yazd	1753	1638

1. Relating to the greater pilgrimage.

Source: Civil Aviation Organization.

12.20. WEIGHT OF FREIGHT AND POSTAL ARTICLES TRANSPORTED THROUGH AIRPORTS OF THE COUNTRY BY DOMESTIC AND INTERNATIONAL FLIGHT (ton)

Year	Freight					
	Dispatched			Received		
	Total	Domestic	International	Total	Domestic	International
1375.....	48246	29265	18981	45229	29265	15964
1380.....	51979	26968	25012	52953	26968	25985
1385.....	58529	32173	26356	128559	32173	96386
1390.....	81219	56413	24806	117634	56413	61221
1391.....	39598	13581	26017	54811	13581	41230
1392.....	28701	11157	17544	45392	11157	34235
1393.....	32088	10086	22002	50596	10086	40510
1394.....	42606	9687	32919	53440	9687	43753

Year	Postal articles					
	Dispatched			Received		
	Total	Domestic	International	Total	Domestic	International
1375.....	5178	1652	3526	5054	1652	3402
1380.....	3914	2751	1162	3970	2751	1218
1385.....	6774	4763	2011	9723	4763	4960
1390.....	8023	3843	4180	11685	3843	7842
1391.....	4276	3005	1271	4129	3005	1124
1392.....	3620	2676	944	3610	2676	934
1393.....	2995	2291	704	3196	2291	905
1394.....	2323	1601	722	2600	1601	999

Source: Civil Aviation Organization.

12.21. GENERAL SPECIFICATIONS OF TRANSPORTATION COOPERATIVES AT THE END OF YEAR
(mln rials)

Description	Number	Members	Employees	Capital
<i>Registered cooperatives⁽¹⁾</i>				
1375.....	801	154752	45941	291703
1380.....	1382	169986	53846	395300
1385.....	2521	186166	66810	456454
1390.....	4116	133853	86106	5159387
1391.....	4145	237404	79260	4756690
1392.....	4205	229816	82639	4634962
1393.....	4263	236770	80680	5091636
1394.....	4301	235744	83135	1351348
<i>Cooperatives under establishment</i>				
1375.....	0	0	0	0
1380.....	0	0	0	0
1385.....	4	54	63	67
1390.....	61	944	973	1649
1391.....	89	1372	1587	2515
1392.....	0	0	0	0
1393.....	2	14	17	4
1394.....	-	-	-	-
<i>Cooperatives in operation</i>				
1375.....	504	60518	39167	4537502
1380.....	776	68607	44047	4613418
1385.....	1455	78324	52375	4704154
1390.....	2579	178316	67804	4678827
1391.....	2386	182103	57406	4579194
1392.....	2297	175097	59536	4460427
1393.....	2168	179107	54899	4853063
1394.....	2171	175107	60102	1251685

12. 21. GENERAL SPECIFICATIONS OF TRANSPORTATION COOPERATIVES AT THE END OF YEAR (continued)

Description	(mln rials)			
	Number	Member	Employees	Capital
East Azarbayejan	89	13226	2557	10909
West Azarbayejan	35	7073	2142	12148
Ardebil	26	5646	314	1650
Esfahan	88	18321	2066	78739
Alborz	12	1355	401	7441
Ilam	4	93	35	47
Bushehr	194	4284	3937	90815
Tehran	126	12512	9714	394940
Chaharmahal & Bakhtiari	33	1796	2025	13773
South Khorasan	10	1532	1532	1411
Khorasan-e-Razavi	97	23217	1761	13835
North Khorasan	44	2590	2170	2952
Khuzestan	71	7557	1248	378997
Zanjan	31	3697	572	3785
Semnan	18	2175	2468	687
Sistan & Baluchestan	68	1774	794	48331
Fars	75	11126	2747	27427
Qazvin	37	4071	1017	2693
Qom	8	3821	94	3358
Kordestan	53	4325	746	1870
Kerman	84	4318	1192	3478
Kermanshah	37	3536	794	881
Kohgiluyeh & Boyerahmad	32	236	230	1065
Golestan	66	3817	1054	11129
Gilan	111	7799	5822	6728
Lorestan	99	2621	912	5915
Mazandaran	142	9369	3255	11449
Markazi	114	6063	978	1602
Hormozgan	244	4794	3934	112098
Hamedan	31	2271	298	652
Yazd	92	92	3293	880

1. Including cooperatives in operation, out of operation, and under establishment.

Source: Ministry of Cooperatives, Labor and Social Welfare.

12. 22. NUMBER OF ESTABLISHMENTS RENDERING STORAGE SERVICES BY TYPE OF MAIN ACTIVITY AND OSTAN

Ostan	Total	Storage	Cold storage
1384	820	378	442
1387	827	393	434
1390	1140	530	611
1393	1285	628	657
East Azarbayejan	79	27	53
West Azarbayejan	167	3	164
Ardebil	13	0	13
Esfahan	63	35	28
Alborz	22	0	22
Ilam	4	2	2
Bushehr	6	2	4
Tehran	461	438	23
Chaharmahal & Bakhtiari	6	2	4
South Khorasan	5	0	5
Khorasan-e-Razavi	41	6	35
North Khorasan	3	0	3
Khuzestan	11	0	11
Zanjan	7	0	7
Semnan	16	6	10
Sistan & Baluchestan	11	0	11
Fars	13	0	13
Qazvin	11	1	10
Qom	17	13	4
Kordestan	6	2	4
Kerman	100	0	100
Kermanshah	5	0	5
Kohgiluyeh & Boyerahmad	2	0	2
Golestan	18	6	12
Gilan	7	5	2
Lorestan	12	4	8
Mazandaran	73	15	58
Markazi	5	0	5
Hormozgan	78	55	23
Hamedan	17	3	13
Yazd	6	2	4

Source: Statistical Centre of Iran.

**12.23. EMPLOYEES OF ESTABLISHMENTS RENDERING STORAGE SERVICES AND
COMPENSATION OF WAGE AND SALARY WORKERS BY OSTAN**

Ostan	Total workers	Wage and salary workers	Unpaid wage and salary workers	Compensation of workers (salary and allowances and other cash and kind payments to wage and salary workers)
1384	8177	7083	1094	230341155
1387	8582	7528	1054	437933687
1390	10410	9252	1158	696498704
1393	10911	9468	1443	1204641661
East Azarbayejan	684	568	117	92663089
West Azarbayejan	1063	892	171	116915178
Ardebil	110	97	13	7244929
Esfahan	565	479	86	56779981
Alborz	142	106	36	10749003
Ilam	52	50	2	5062500
Bushehr	151	144	6	10689767
Tehran	4123	3459	664	510565645
Chaharmahal & Bakhtiari	36	35	1	4259951
South Khorasan	21	20	1	2100799
Khorasan-e-Razavi	390	365	25	38999397
North Khorasan	29	27	2	2200858
Khuzestan	203	193	10	19256183
Zanjan	84	82	2	9456933
Semnan	136	128	9	12177002
Sistan & Baluchestan	175	170	4	13809649
Fars	231	217	13	22834605
Qazvin	152	141	11	21980089
Qom	88	56	31	7987136
Kordestan	43	40	3	3448800
Kerman	460	355	106	32618051
Kermanshah	28	27	1	3755200
Kohgiluyeh & Boyerahmad	10	9	1	1239200
Golestan	177	165	12	16696015
Gilan	108	102	6	23639418
Lorestan	81	69	13	6605000
Mazandaran	408	356	52	42288800
Markazi	38	30	8	2615758
Hormozgan	917	891	26	85448139
Hamedan	162	153	9	15269769
Yazd	44	41	3	5284818

Source: Statistical Centre of Iran.

12. 24. CHARACTERISTICS OF SPECIFIC PRESERVATION AREA OF GOODS IN THE NATIONAL STORAGES BY OSTAN

Year and ostan	No. of storages ⁽¹⁾	Roofed space with side wall		Roofed space without side wall (hangar)		Open space (sq m)	Total capacity (cu m)
		Number	Area (sq m)	Number	Area (sq m)		
1385	397	1408	1124829	216	597385	1860557	10893866
1388	415	1506	1006280	227	487712	2030991	10781408
1391	537	1859	1460442	285	450844	3407579	16549968
1394	661	1899	2027948	299	459831	4224810	18740527
East Azarbayejan ..	28	85	125047	92	164312	170388	1421861
West Azarbayejan ..	6	37	49316	0	0	66500	381261
Ardebil	4	15	6031	0	0	0	16369
Esfahan	35	56	84740	4	30600	41500	552420
Alborz	0	0	0	0	0	0	0
Ilam	2	11	9243	0	0	0	34578
Bushehr	4	5	3861	0	0	0	12330
Tehran	444	1393	1513937	182	209215	3140960	13286739
Chaharmahal & Bakhtiyari	2	14	8255	0	0	10000	52765
South Khorasan	0	0	0	0	0	0	0
Khorasan-e-Razavi	9	27	19829	0	0	10000	120226
North Khorasan	1	0	0	0	0	0	0
Khuzestan	3	14	12750	0	0	0	52417
Zanjan	0	0	0	0	0	0	0
Semnan	7	9	3733	4	2525	18000	60983
Sistan & Baluchestan	0	0	0	0	0	0	0
Fars	0	0	0	0	0	0	0
Qazvin	1	5	13692	3	9450	29000	153852
Qom	13	33	6684	3	1436	8802	49237
Kordestan	3	13	7800	0	0	0	38500
Kerman	0	0	0	0	0	0	0
Kermanshah	0	0	0	0	0	0	0
Kohgiluyeh & Boyerahmad	0	0	0	0	0	0	0
Golestan	6	34	44499	0	0	0	173966
Gilan	5	8	10690	3	25830	86100	370620
Lorestan	4	16	6400	0	0	0	25600
Mazandaran	15	41	39831	0	0	0	114110
Markazi	3	19	6303	0	0	0	19539
Hormozgan	59	52	34922	8	16463	626559	1664057
Hamedan	3	6	7983	0	0	7000	42597
Yazd	2	5	12400	0	0	10000	96500

1. Referring to the establishments whose main or side activity is storekeeping.

Source: Statistical Centre of Iran.

12. 25. CHARACTERISTICS OF NATIONAL COLD STORAGEES BY TYPE OF HALLS AND OSTAN

Year and Ostan	Number of cold storages	One-circuit below zero			One-circuit above zero		
		Number	Area (sq m)	Volume (cu m)	Number	Area (sq m)	Volume (cu m)
1385	443	472	128433	577420	2328	541650	2423755
1388	437	500	146295	642234	2609	630363	2623115
1391	643	477	188115	811753	3295	938887	4250233
1394	676	684	238720	1042901	3554	1086879	4719831
East Azarbayejan	53	39	22798	69963	220	87988	370300
West Azarbayejan	165	105	31390	137913	1211	345993	1459565
Ardebil	13	9	1792	9496	80	30186	154627
Esfahan	30	109	19704	97800	328	84461	330465
Alborz	22	12	4650	22002	126	39086	146123
Ilam	4	4	1260	5760	13	4500	21920
Bushehr	4	14	3966	14480	6	1792	8192
Tehran	24	82	52871	243877	262	124464	525611
Chaharmahal & Bakhtiyari	4	3	210	960	31	6116	12860
South Khorasan	5	11	4525	18800	5	1725	6700
Khorasan-e-Razavi.....	35	67	20356	84111	129	41433	191488
North Khorasan.....	3	0	0	0	1	100	500
Khuzestan.....	11	16	2727	11213	7	864	2557
Zanjan	7	11	3325	14000	35	10479	140000
Semnan	10	2	542	1625	88	19992	59865
Sistan & Baluchestan	11	7	1805	7321	49	10075	43115
Fars	13	27	10324	46679	212	79336	363254
Qazvin	10	2	400	1500	39	8060	31320
Qom.....	4	3	267	800	47	10400	30000
Kordestan	5	13	2400	11500	23	4116	18500
Kerman	100	17	5188	25305	216	76600	356740
Kermanshah	5	3	573	1853	11	1573	6960
Kohgiluyeh & Boyerahmad	2	1	600	2400	9	2670	12300
Golestan	12	19	7296	29670	29	8784	39132
Gilan.....	2	0	0	0	3	960	5100
Lorestan	8	5	2500	12500	15	4500	20250
Mazandaran	58	26	19097	95891	258	52711	248780
Markazi	5	6	1733	8667	14	8352	29467
Hormozgan	31	42	7664	25290	25	3505	9127
Hamedan	16	24	6958	33626	57	15048	71721
Yazd	5	7	1800	7900	7	1010	3290

**12. 25.CHARACTERISTIS OF DOMESTIC COLD STORAGEES AND TYPE OF THEIR HALLS
BY OSTAN (continued)**

Ostan	Two-circuit zero			
	Number	Area (sq m)	Volume(cu m)	Nominal capacity (ton)
1385	558	195531	808560	1091389
1388	790	222913	989542	1183597
1391	743	246429	1101817	1520077
1394	784	274091	1188257	1830754
East Azarbayejan.....	26	15203	71388	191046
West Azarbayejan	15	2786	13931	464316
Ardebil	2	538	2692	49754
Esfahan.....	74	21362	81812	108750
Alborz	24	6468	20361	61204
Ilam	2	1701	8505	4230
Bushehr	6	768	3840	5000
Tehran	144	67174	296031	151729
Chaharmahal & Bakhtiyari	4	528	2000	14400
South Khorasan	0	0	0	2500
Khorasan-e-Razavi.....	65	33719	158018	146074
North Khorasan	11	5600	26000	5000
Khuzestan.....	30	13420	55135	21250
Zanjan	7	2079	8750	14875
Semnan.....	0	0	0	13867
Sistan & Baluchestan	0	0	0	19700
Fars.....	50	18577	80224	59162
Qazvin	43	12000	51000	22800
Qom.....	0	0	0	22000
Kordestan	15	1800	7000	19000
Kerman.....	42	13988	65107	160606
Kermanshah	25	7253	35627	13000
Kohgiluyeh & Boyerahmad	1	324	1620	5500
Golestan	32	7704	23490	45228
Gilan.....	6	1320	6900	4700
Lorestan.....	18	6320	26640	12500
Mazandaran.....	102	19676	95866	111503
Markazi	3	315	630	10085
Hormozgan.....	23	6772	26463	8808
Hamedan	4	1696	6226	54808
Yazd	10	5000	13000	7360

Source: Statistical Centre of Iran.

12.26. VALUE ADDED, INTERMEDIATE CONSUMPTION, AND OUTPUTS OF NATIONAL STORAGE SERVICES ESTABLISHMENTS BY OSTAN (thousand rials)

Year and ostan	Value added	Intermediate consumption	Outputs			
			Total	Cellarage	Cold storage fees	Other
1384.....	563486845	134571395	698058240	192492669	389339368	116226203
1387.....	1164477887	248742118	1413220005	521203155	773872932	118143918
1390.....	1783932925	436867919	2220800844	848408796	890920787	481471262
1393.....	3462828948	795954509	4258783457	1717475567	1856577765	684730125
East Azarbayejan	243475207	34532024	278007231	100399525	109572626	68035079
West Azarbayejan	383556503	71579029	455135532	73925085	354341261	26869185
Ardebil	17721983	3654827	21376810	2800000	15755272	2821538
Esfahan	139937697	33316958	173254655	71124004	87175000	14955650
Alborz	75148518	10728527	85877045	0	71065152	14811894
Ilam	6057180	736020	6793200	630000	6163200	0
Bushehr.....	13967547	2580720	16548267	3383467	11980000	1184800
Tehran	1496945913	346868489	1843814402	1201334246	296022185	346457972
Chaharmahal & Bakhtiyari	8890650	839350	9730000	3180000	6350000	200000
South Khorasan	7534966	1816394	9351360	0	9291360	60000
Khorasan-e-Razavi	126861379	33025731	159887110	14844959	143515865	1526286
North Khorasan.....	8734732	1554967	10289699	618722	8718722	952256
Khuzestan	26919180	8484737	35403917	7321333	26626250	1456333
Zanjan	14932390	7666282	22598672	0	22598672	0
Semnan	22304162	7852282	30156444	4799628	22238125	3118692
Sistan & Baluchestan	16598449	4986493	21584942	0	21223904	361038
Fars	125110421	16107690	141218110	0	122618461	18599650
Qazvin	88863886	16214020	105077906	21822256	39462000	43793650
Qom	17270407	6775244	24045651	7235487	12073910	4736254
Kordestan	7065160	4004840	11070000	2400000	7580000	1090000
Kerman	100668960	28444948	129113908	0	127470069	1643839
Kermanshah	7714266	3593067	11307333	0	7667333	3640000
Kohgiluyeh & Boyerahmad	2443100	556900	3000000	0	3000000	0
Golestan.....	35197217	12424282	47621499	1928571	44009192	1683735
Gilan	37319130	6232970	43552100	16660800	8280000	18611300
Lorestan	15867750	4832250	20700000	7200000	13500000	0
Mazandaran	206583307	37884880	244468187	65810571	136141617	42515998
Markazi	6420976	1386903	7807879	843030	6224242	740606
Hormozgan	123359284	74488529	197847813	91404141	43383070	63060602
Hamedan	62168228	8603558	70771786	4109740	65168279	1493766
Yazd	17190400	4181600	21372000	13700000	7362000	310000

Source: Statistical Centre of Iran.

12. 27. NUMBER AND CAPACITY OF OPERATING SILOS AND WHEAT WAREHOUSE BY TYPE
(1000 tons)

Year and Ostan	Wheat silo		Type of wheat warehouse			
			Regular covered warehouse		Uncovered	
	Number	Capacity	Number	Capacity	Number	Capacity
1375.....	62	1839	67	499	13	1200
1380.....	91	2709	36	490	16	1730
1385.....	94	2881	42	538	16	1900
1390.....	84	2985	67	1078	17	1980
1391.....	84	2985	67	1078	17	1980
1392.....	84	2985	67	1078	17	1980
1393.....	85	3025	68	1098	17	1980
1394.....	88	3115	69	1118	17	1980
East Azarbayejan	7	170	5	75	0	0
West Azarbayejan	4	84	7	55	1	100
Ardebil	3	68	1	20	1	100
Esfahan	3	143.5	0	0	1	180
Alborz.....	1	80	1	40	0	0
Ilam	0	0	1	20	1	140
Bushehr	1	8	1	20	0	0
Tehran	4	264	2	10	1	280
Chaharmahal & Bakhtiari	1	27.5	0	0	0	0
South Khorasan	1	5	2	30	0	0
Khorasan-e-Razavi.....	8	235.5	2	40	1	240
North Khorasan.....	2	55	0	0	0	0
Khuzestan.....	6	244	5	90	1	150
Zanjan	1	8	1	15	1	100
Semnan	1	27.5	1	20	1	80
Sistan & Baluchestan	2	79	2	40	0	0
Fars	4	151.5	7	180	2	210
Qazvin	1	80	2	25	0	0
Qom.....	2	107.5	1	20	0	0
Kordestan	3	78	5	60	0	0
Kerman	5	215.5	0	0	1	40
Kermanshah	6	188	6	68	2	80
Kohgiluyeh & Boyerahmad	1	215.5	0	0	0	0
Golestan.....	6	172	5	110	0	0
Gilan.....	1	103	0	0	0	0
Lorestan.....	7	165	4	45	0	0
Mazandaran	1	103	0	0	0	0
Markazi	2	41	1	20	1	100
Hormozgan.....	0	0	1	20	1	100
Hamedan	3	166	6	95	0	0
Yazd	1	18	0	0	1	80

Source: Iranian Government Commerce Company